


COMUNE DI ROMANA
 PROVINCIA DI SASSARI



PIANO PARTICOLAREGGIATO DEL CENTRO DI ANTICA E PRIMA FORMAZIONE

Progettista incaricato
 Dott.ssa Pian. Manuela A. Sanna

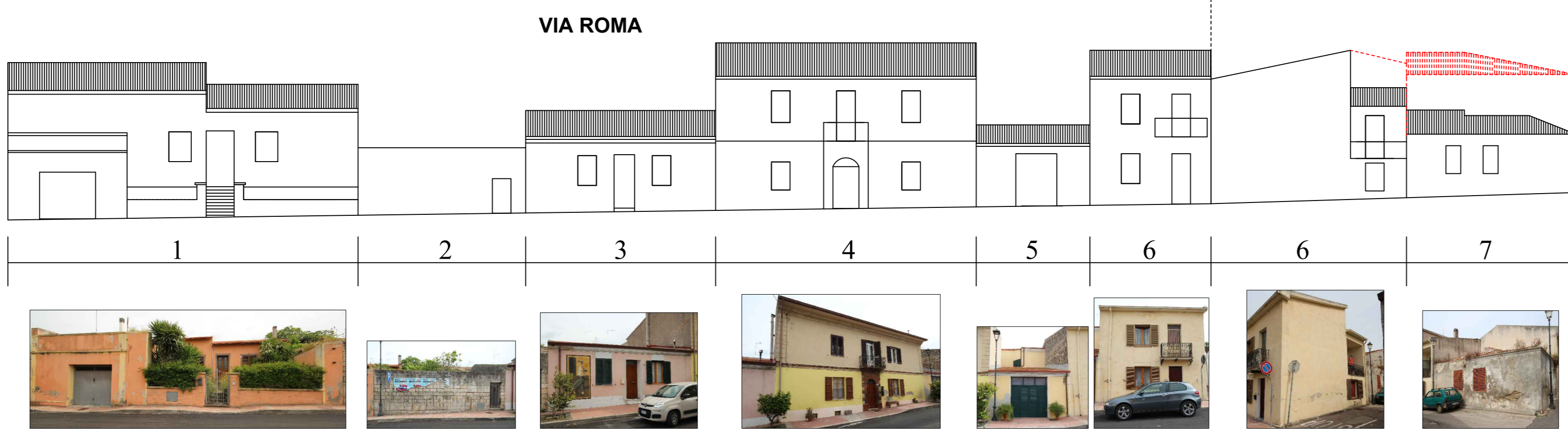
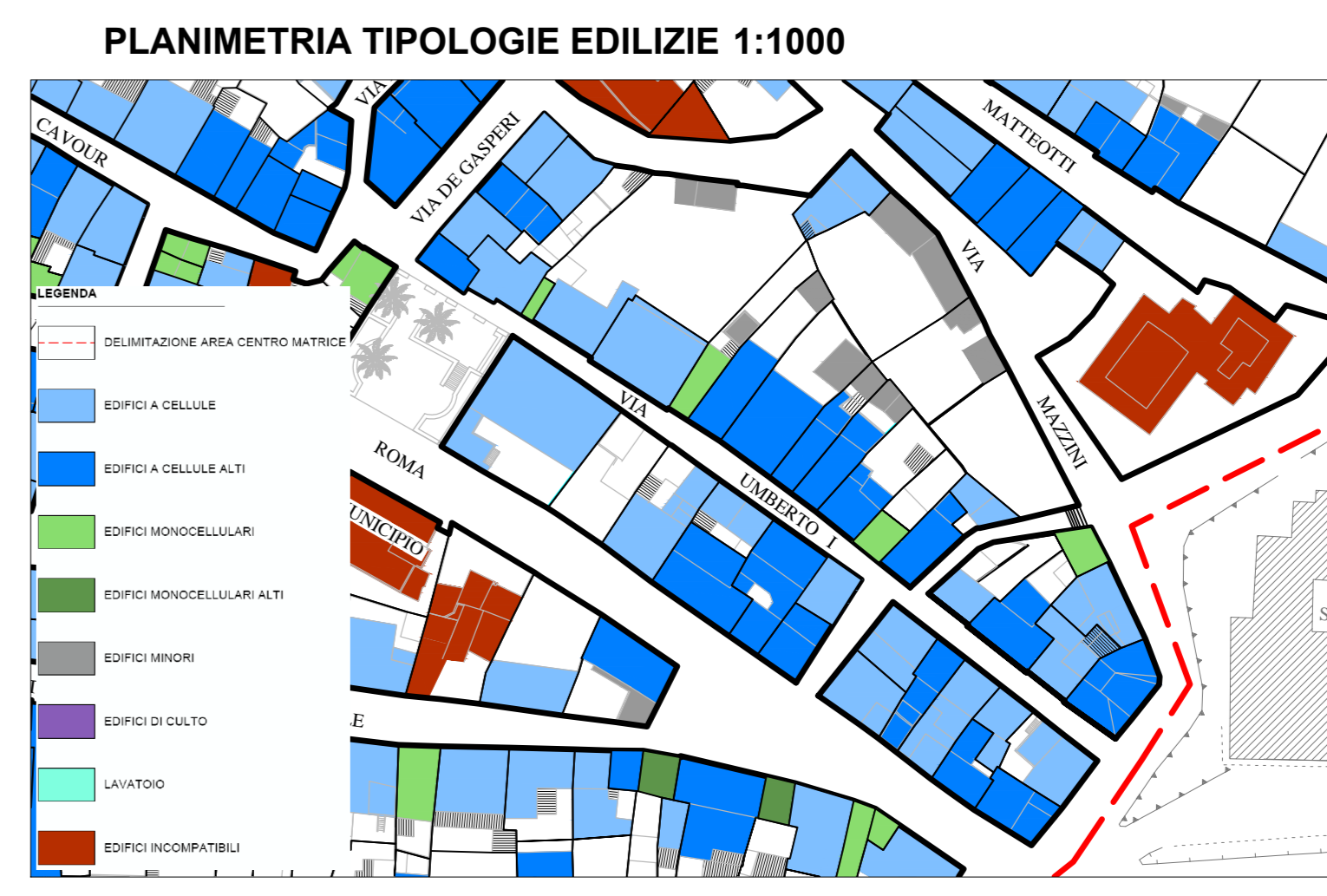
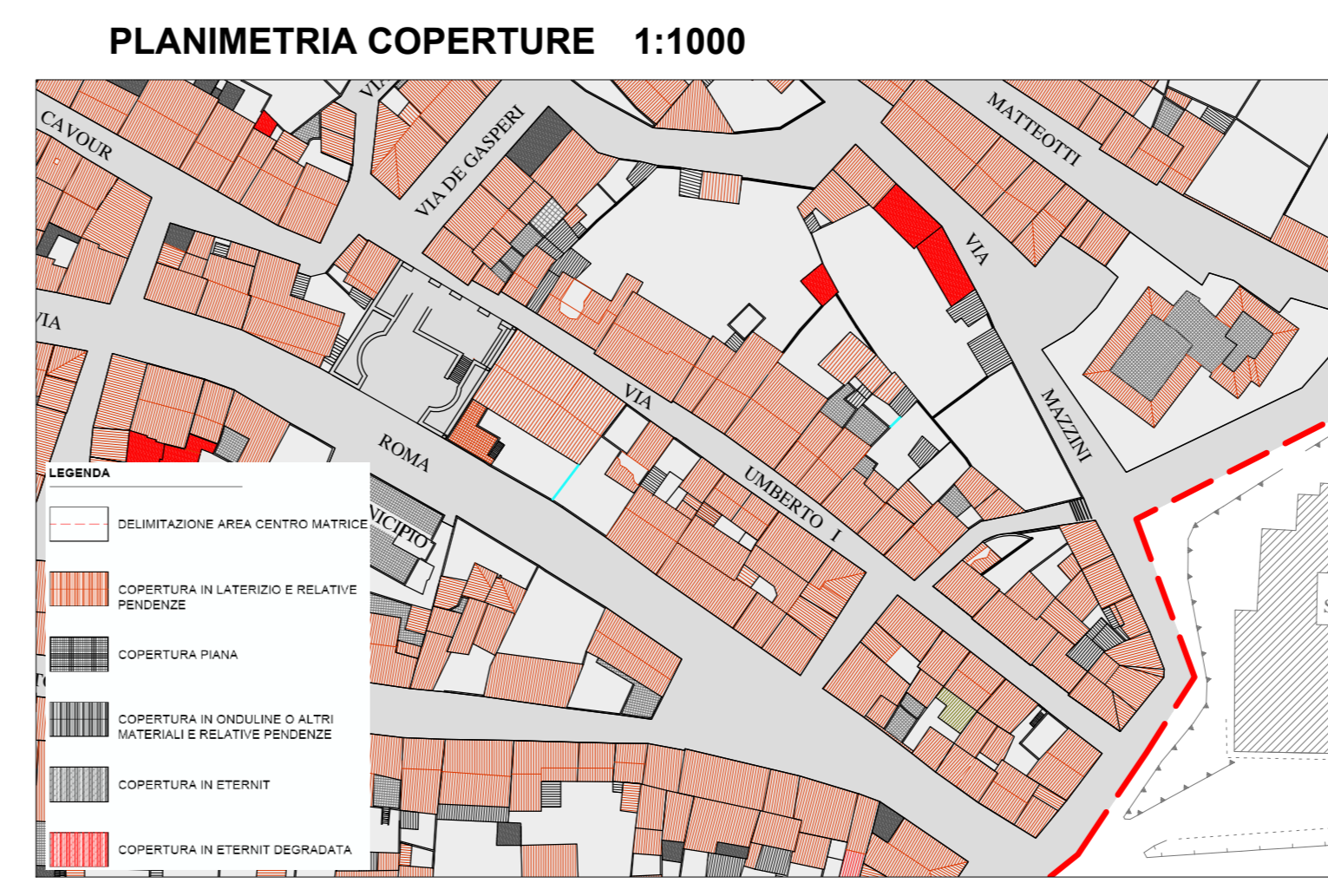
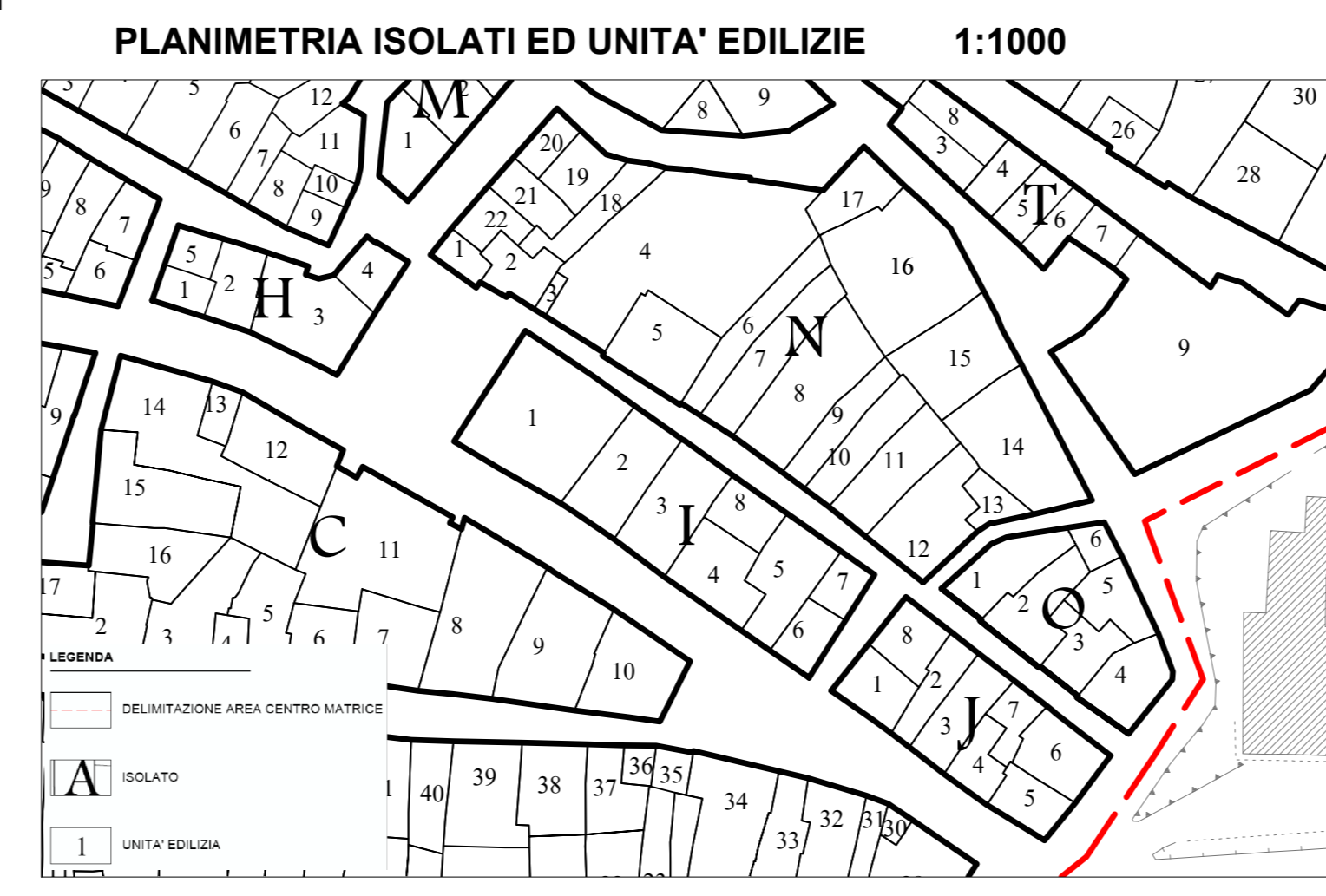
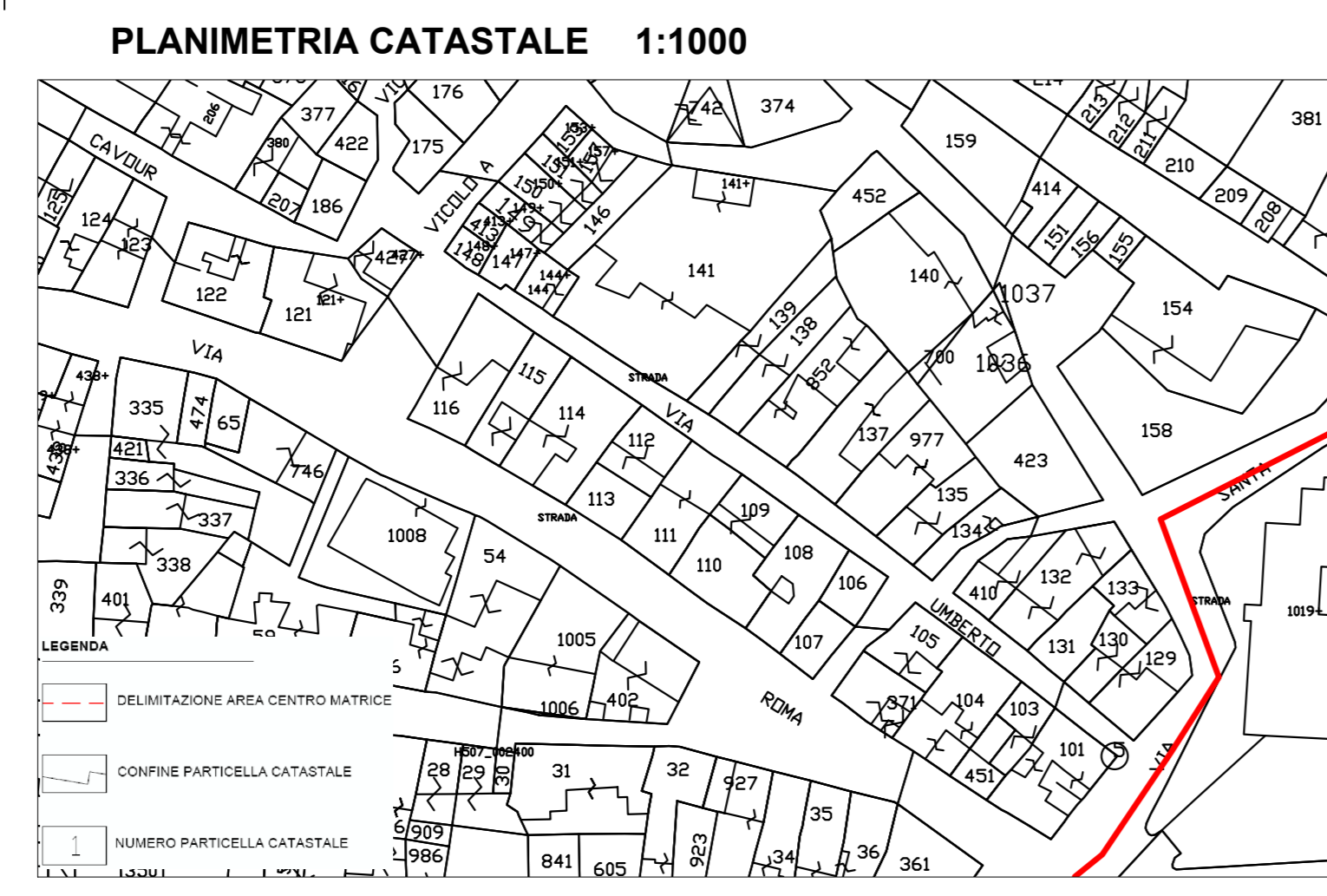
Il Responsabile dell'area tecnica e R.U.P.
 Dott. M. Ing. Guglielmo Campanile




Gruppo di lavoro
 Ing. Massimiliano Carboni – Supporto R.U.P.
 Pian. Eleonora Cappello – Supporto R.U.P.

Il Sindaco
 Dott.ssa Lucia Catta

Il Vice Segretario Comunale
 Dott.ssa Carmela Calaresu

PPCS I **PROFILI ISOLATO I** Scala 1:200



- LEGENDA**
-  AMPLIAMENTO/NUOVA COSTRUZIONE
 -  RIMOZIONE COPERTURA IN ETERNIT
 -  DEMOLIZIONE CON RICOSTRUZIONE EX C.4 ART.6 DELLE NTA

