
  
**COMUNE DI ROMANA**  
 PROVINCIA DI SASSARI



**PIANO PARTICOLAREGGIATO DEL CENTRO DI ANTICA E PRIMA FORMAZIONE**

Progettista incaricato  
 Dott.ssa Pian. Manuela A. Sanna

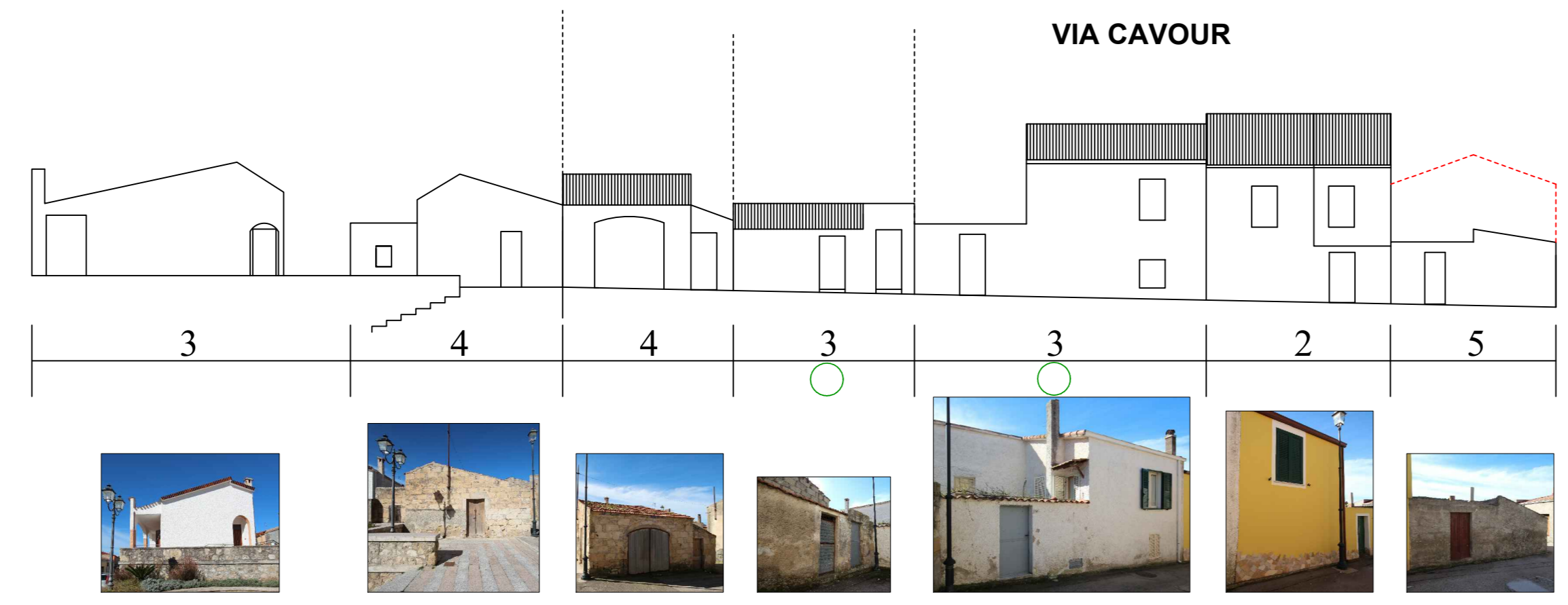
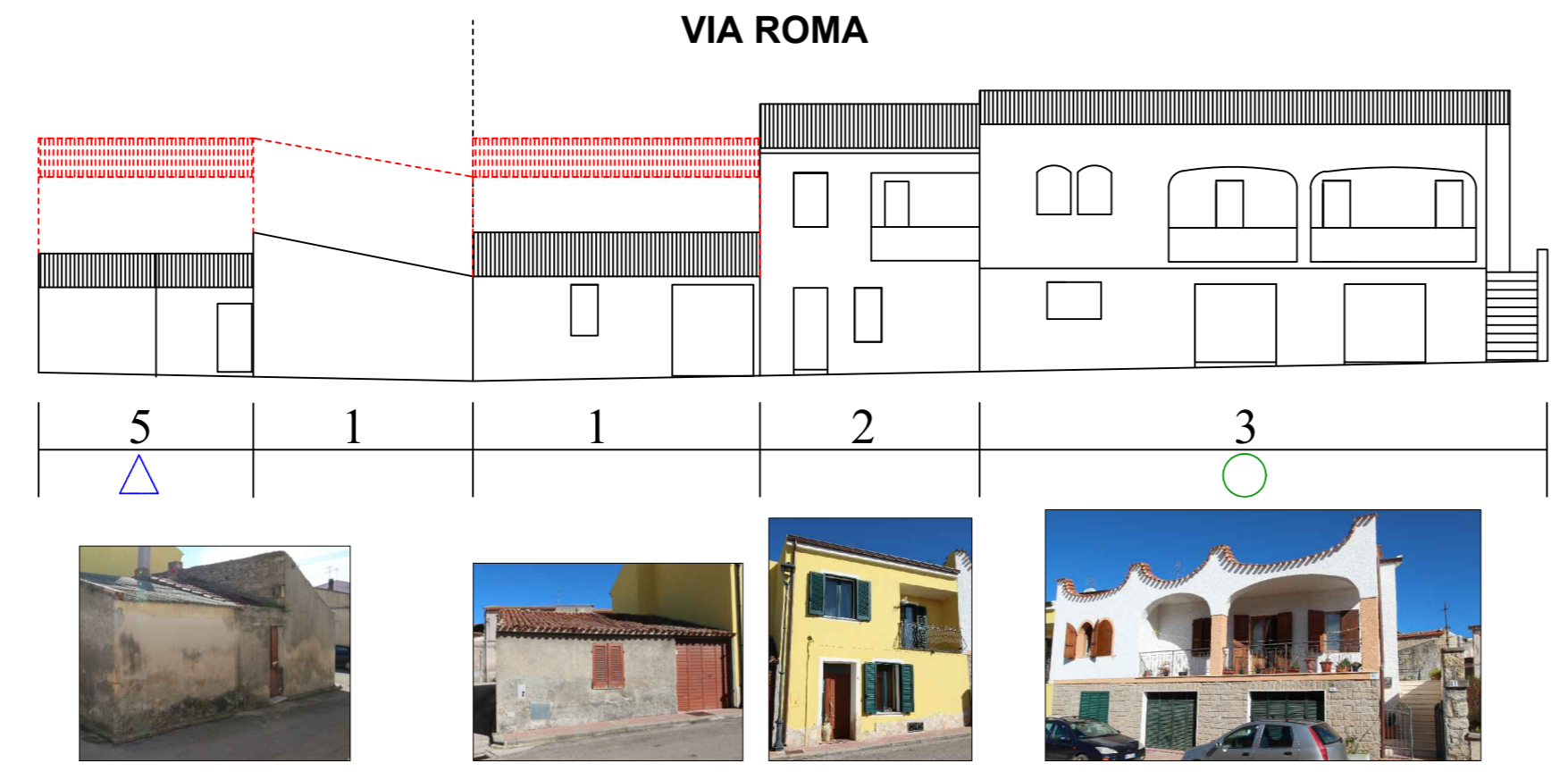
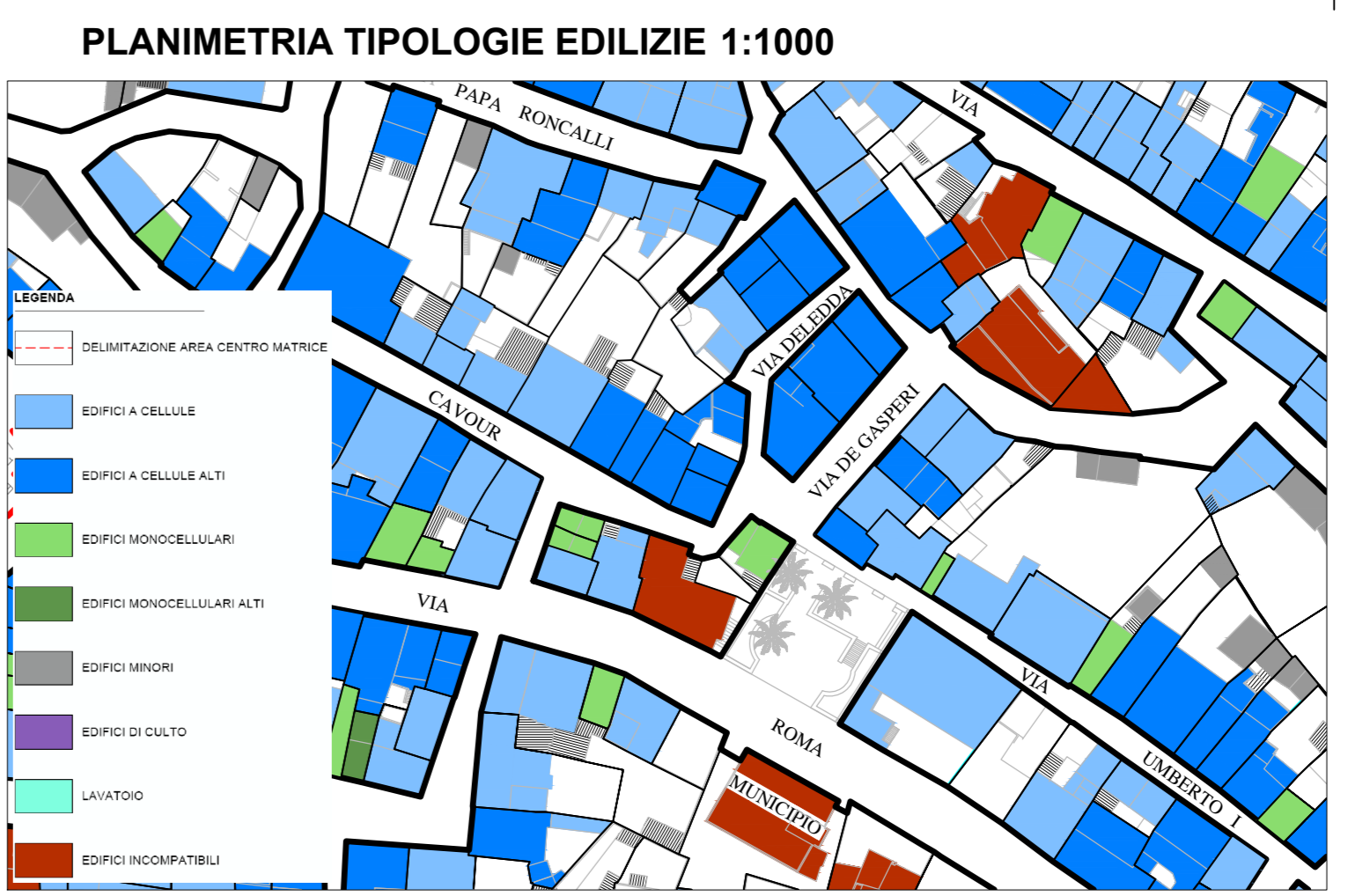
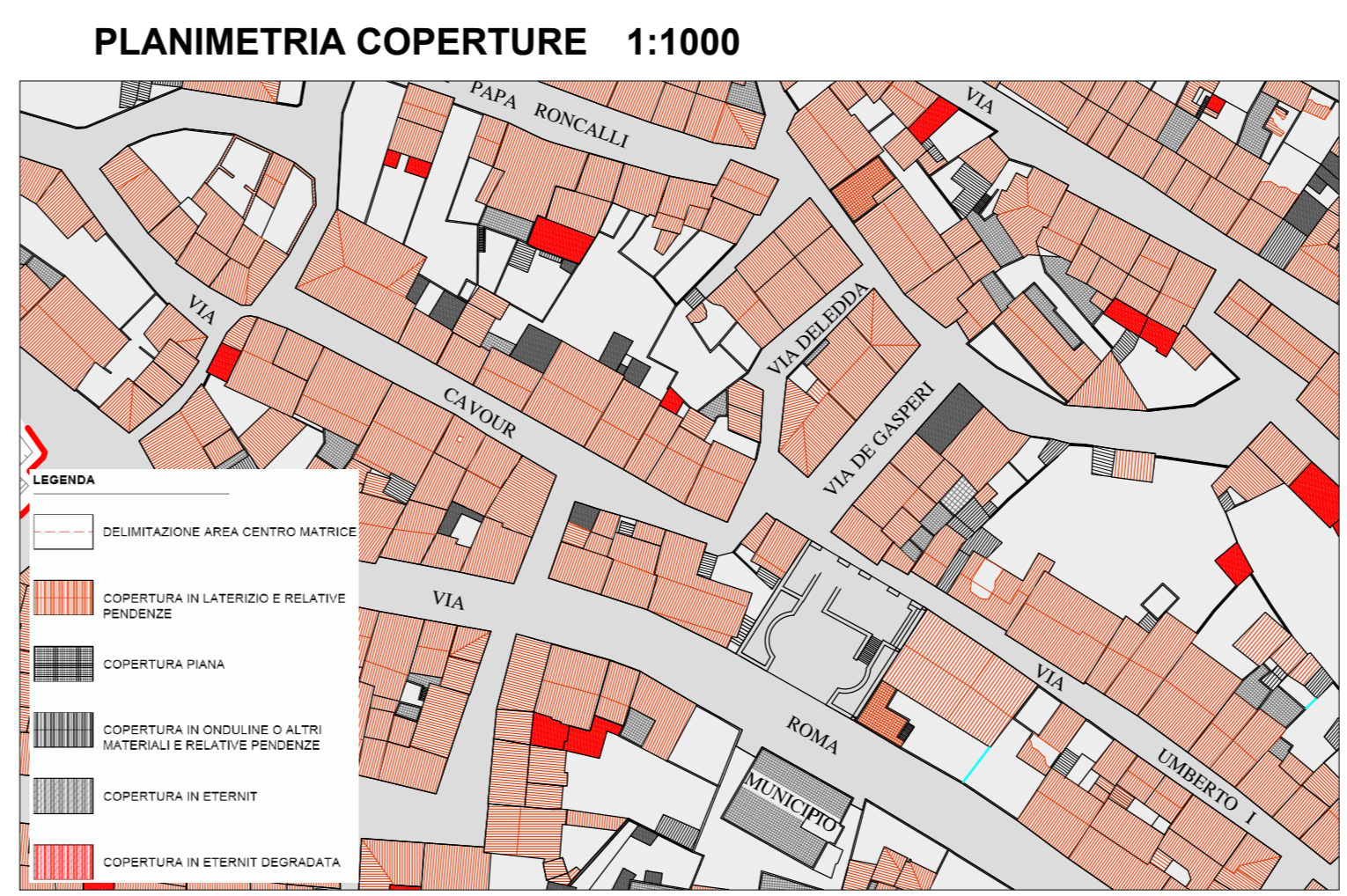
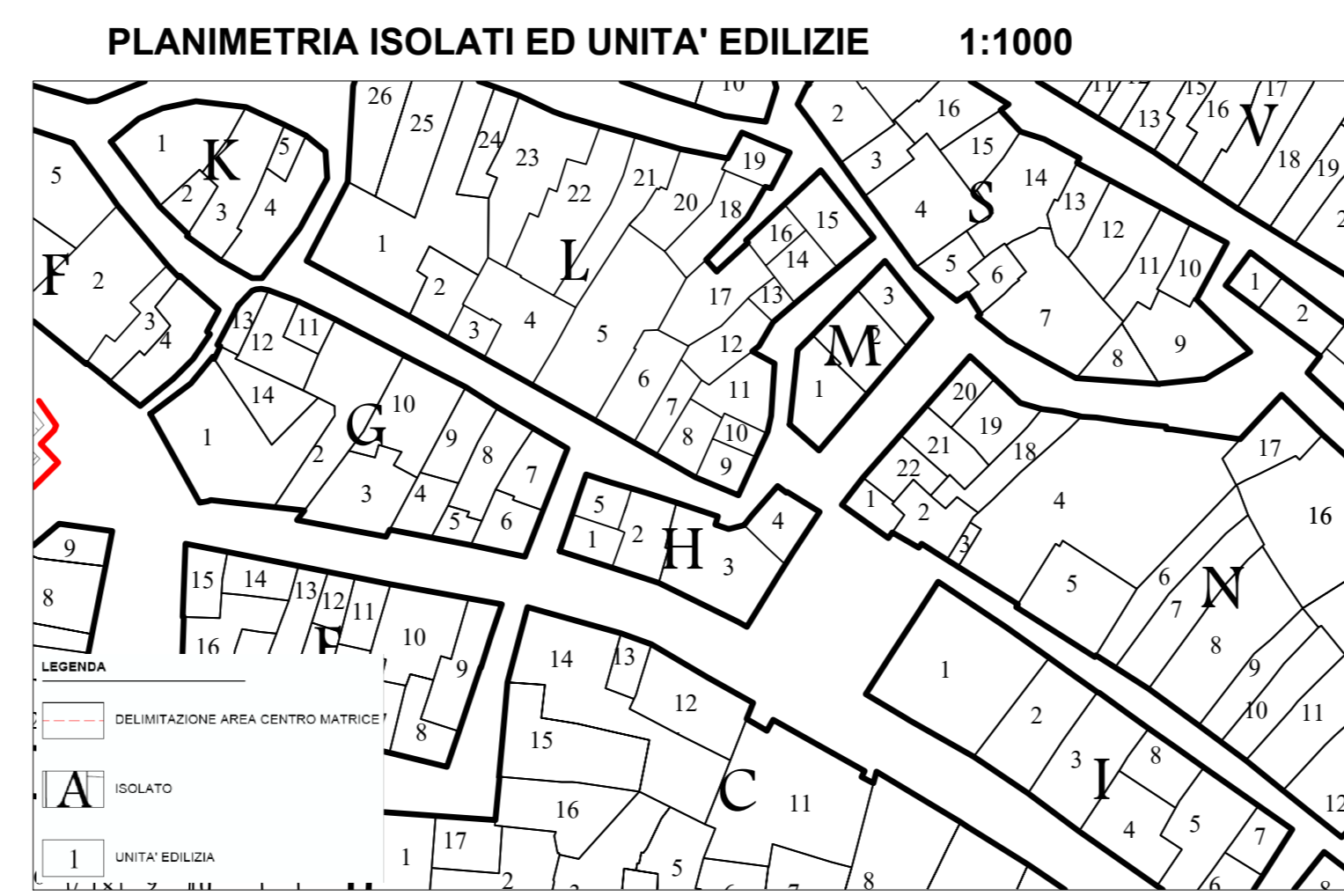
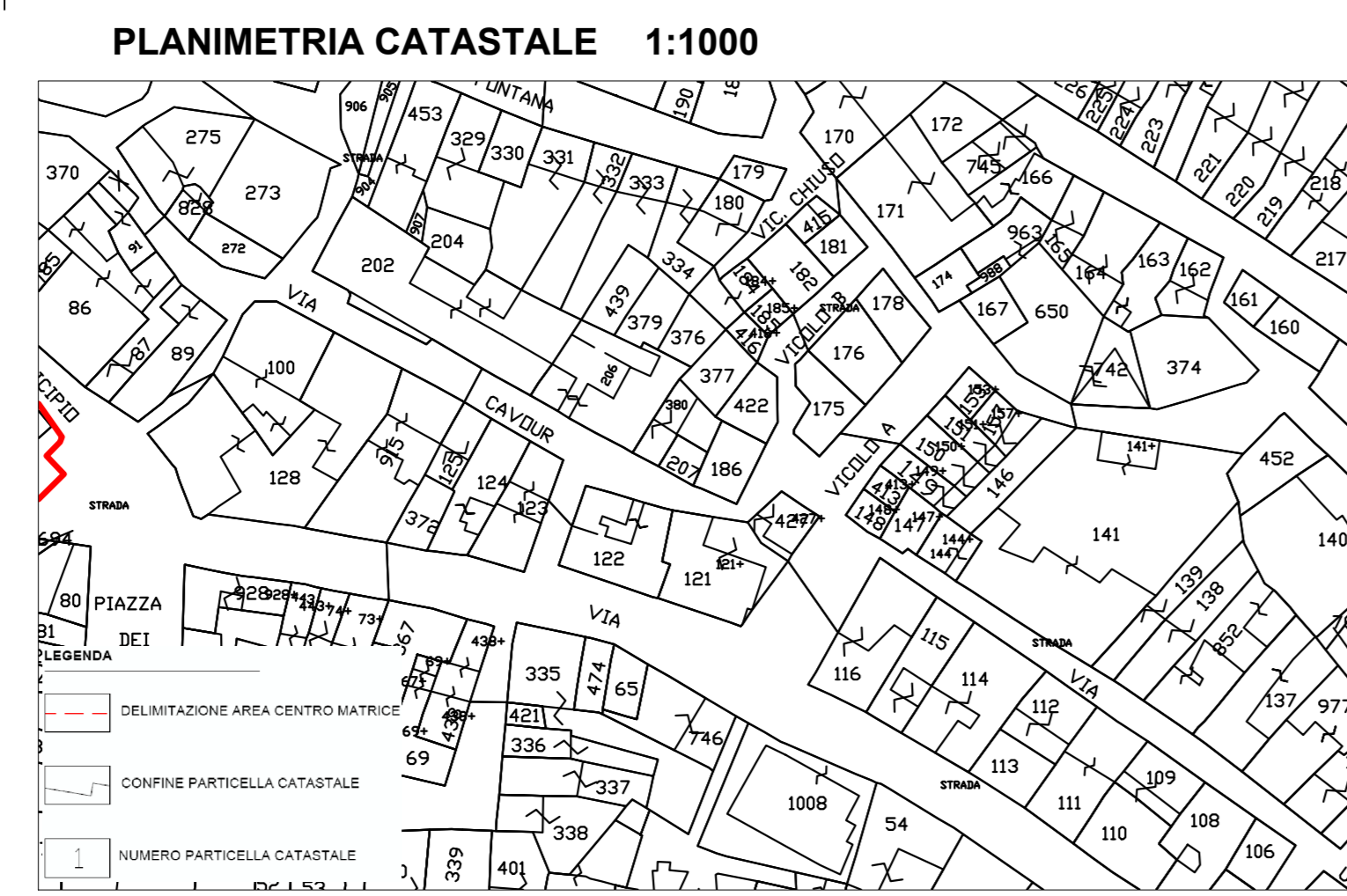
Il Responsabile dell'area tecnica e R.U.P.  
 Dott. M. Ing. Guglielmo Campanile

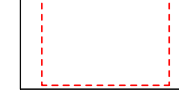
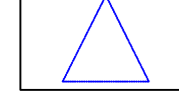

Gruppo di lavoro  
 Ing. Massimiliano Carboni – Supporto R.U.P.  
 Pian. Eleonora Cappello – Supporto R.U.P.

Il Sindaco  
 Dott.ssa Lucia Catta

Il Vice Segretario Comunale  
 Dott.ssa Carmela Calaresu

**PPCS H**    **PROFILI ISOLATO H**    Scala 1:200



- LEGENDA**
-  AMPLIAMENTO/NUOVA COSTRUZIONE
  -  RIMOZIONE COPERTURA IN ETERNIT
  -  DEMOLIZIONE CON RICOSTRUZIONE EX C.4 ART.6 DELLE NTA

